

Draw an Easter Egg in Photoshop

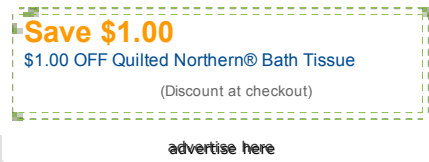
Advertisement

[Tutorials](#) / [Drawing](#) , April 4th, 2011

By: [psddude](#)

Easter is coming soon, so in today's tutorial, I will show you a simple way to create an **egg in Photoshop**. The egg is made from scratch and it is created as a **vector shape** so you can resize without loosing its quality.

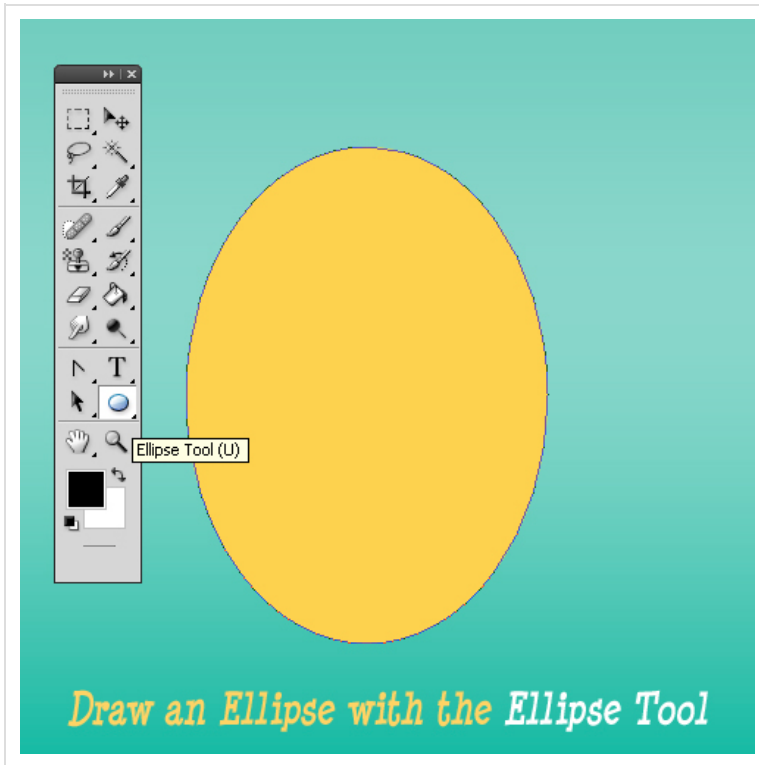
It will take you no more than five minutes to draw these beautiful decorative eggs. They are perfect for creating **Easter cards**. If you want, you can follow the easy way and use one of my [egg shapes](#). Hope you like it!



[Ads by Google](#) [▶ Photoshop](#) [▶ Easter Egg](#) [▶ Tutorial](#) [▶ How to Draw](#)

Draw an Egg Shape

Open a new psd file, size 500x500 pixels. Add a #8bd5c8 background layer. With the Ellipse Tool and draw a simple elliptical shape, the color is not important, I have used a brite yellow color. Call this layer Egg Layer.



Let's remodel the shape to look more like an egg. Use the Convert Point Tool to make the top point of the egg more sharp. Select the top point that describes a curve between two lines. You see two

Like 8,087

Subscribers: **653** | Twitter: **1,523** | Facebook: **8,087**
RSS | Email | [Follow](#)

BEST STOCK IMAGES | Any Image. Any Size. One Price.

Responsive premium themes for Bloggers | [Advertise Here](#)
WORDPRESS | MAGENTO | [BROWSE NOW](#)

[Advertise Here](#)

Vector brushes | Vector Sets | Photoshop brushes | [Commercial use](#)

Search This Site

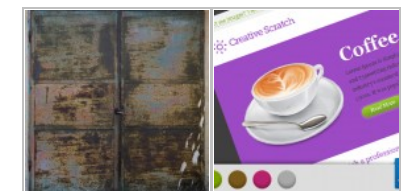
[Search](#)

Free Updates

Sign up for free updates:

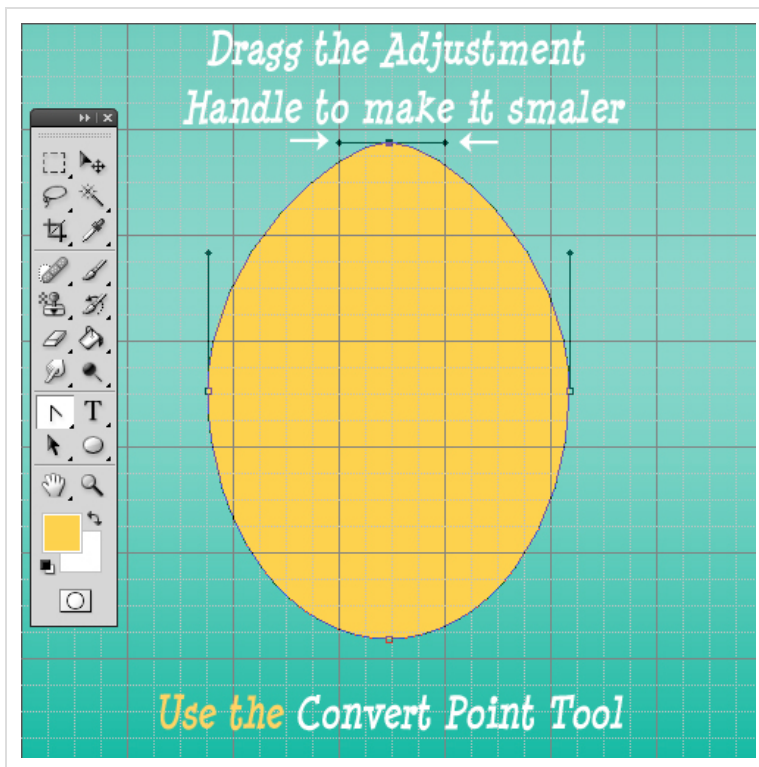
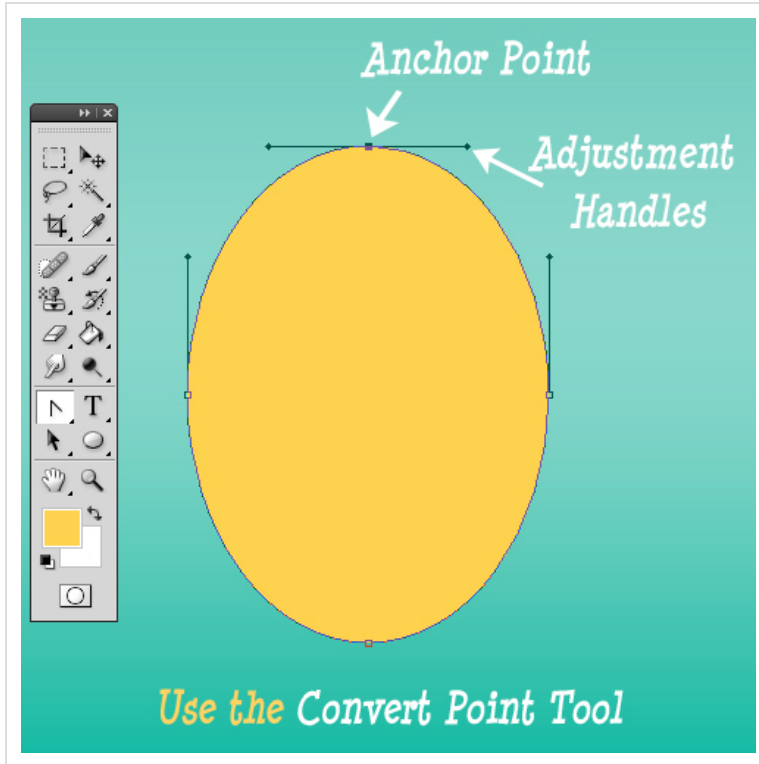
[Subscribe](#)

Delivered by FeedBurner

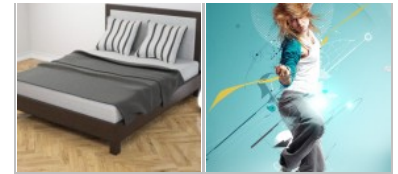


[Tweet](#) 23 | [Like](#) 14 | 0 |

you are wanting to draw the curve. Simply make the handles into smaller by dragging them closer to the anchor point. Press CTRL and ' to see the grid. This grid will help you make simetrical moves.

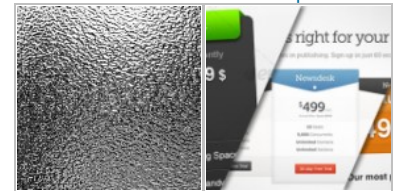


With the same Convert Point Tool and select the two anchor points from right and left and move them down like in the image. Now we have a nice egg shape.



Modern bed 3ds model

Break Dancer – Photoshop Tutorial



High Quality Metal Textures

25 Inspirational Pricing Table Design Examples



Grunge Text Photoshop Tutorial

with underconstruction elements

[Graphics](#)

advertise here

Recent Posts

[Pencil Drawing Brushes for Photoshop](#)

To create a realistic sketch in Photoshop you need some pencil sketch textures or better still you c...

[Create an Emotional Surreal Landscape in Photoshop](#)

In this tutorial you will learn how to create a surreal photo manipulation that combines different s...

[Shelf PSD Layered Files with Free Download](#)

A shelf is pretty useful in website design for displaying different items like books, photos, icons ...

[Flower Blossom Typography Photoshop Tutorial](#)

In this Adobe Photoshop tutorial I will show you how I created this beautiful flower blossom typogra...

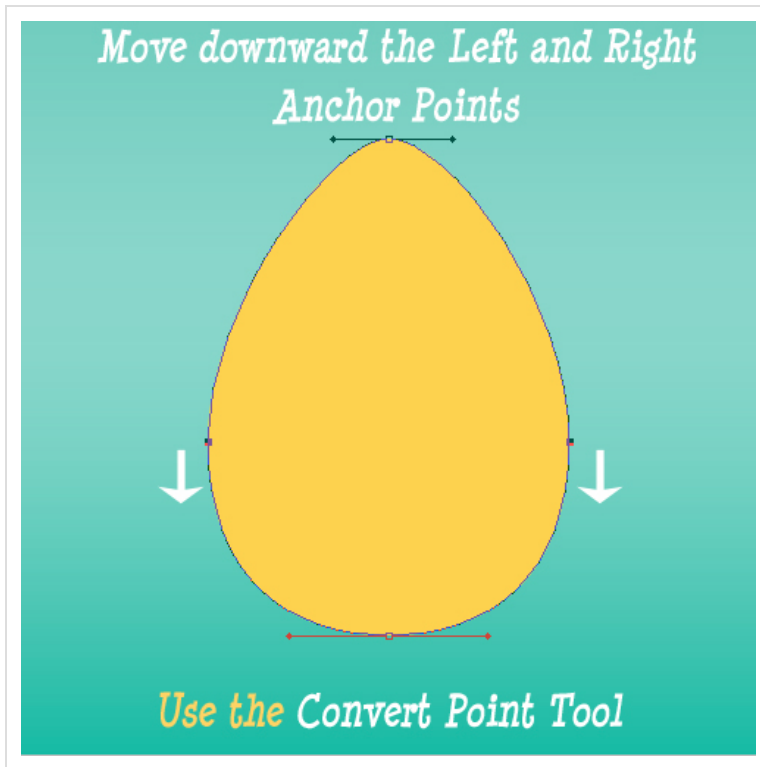
Popular Posts

[Amazing Tattoo Photoshop Brushes](#)

I am not a fan of tattoos but I can still appreciate it as art. There are a lot of people out there,...

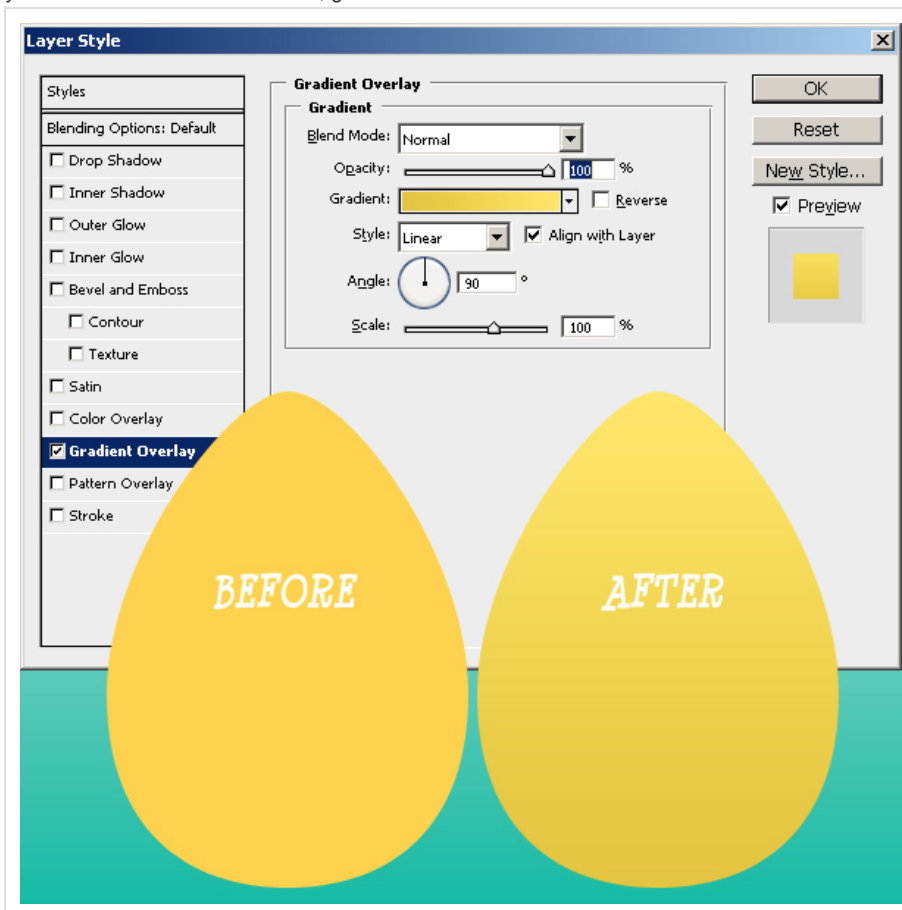
[Creating a cartoon rainbow](#)

Hello girls and boys! Today i want to make a cartoon rainbow... i really hope you will like it! ...



Add 3D Effect to The Egg

As you can see our egg looks too flat, it doesn't have that tridimensional look. Open the Egg Layer Style Window and let's add some cool effects. First let's add a simple Gradient Overlay, with two tones of yellow. You can of course use red, green or other color.



Beautiful Old Paper Textures

Another Photoshop texture that is really used by digital artists is for sure the old paper texture. ...

Ribbon Vector Free Collection

There's something about ribbons that just looks good. I thought about making this Ribbon Vector Free...

Over 100 Amazing Wood Textures

In today list of free textures for Photoshop I have gathered over 100 amazingly beautiful wood textu...

Beautiful Fallen Angel

I saw this beautiful stock image with the girl and decided immediately that she is perfect for an an...

Beautiful Leather Textures for Photoshop Artists

I use textures all the time so for me searching images it has become a daily routine. Today i want t...

A Simple Broken Glass Effect

Hello, today I will show you how easy it is to create a broken glass effect. We will use of course a...

The Mad Hatter from Alice in Wonderland Photoshop Tutorial

I have decided to create a new character from Alice in Wonderland and I hope that maybe someday to r...

Comic Book Effect in Photoshop

To create a Comic Book Effect in Photoshop we have to mix all sort of filters and blend them togethe...

Partners

[FreeITSolutions](#)

[Logolitic](#)

[Tutorialking](#)

[Shapes4FREE](#)

[Tutzor](#)

[BloomWebDesign](#)

[Tutorials Palace](#)

[PSD Blast](#)

[TextTuts](#)

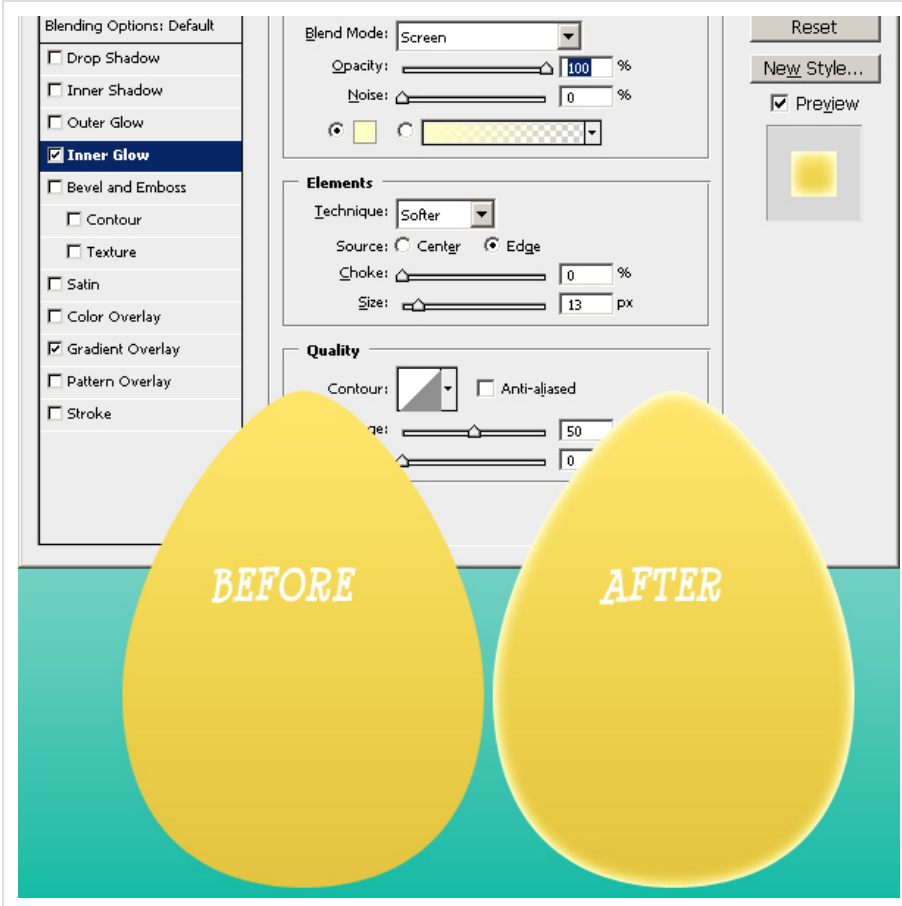
[DaPino-Coloda](#)

[Divine Elemente](#)

[CSS Sites](#)

become our partner

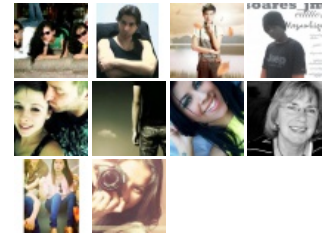
Add Inner Glow as shown in the image:



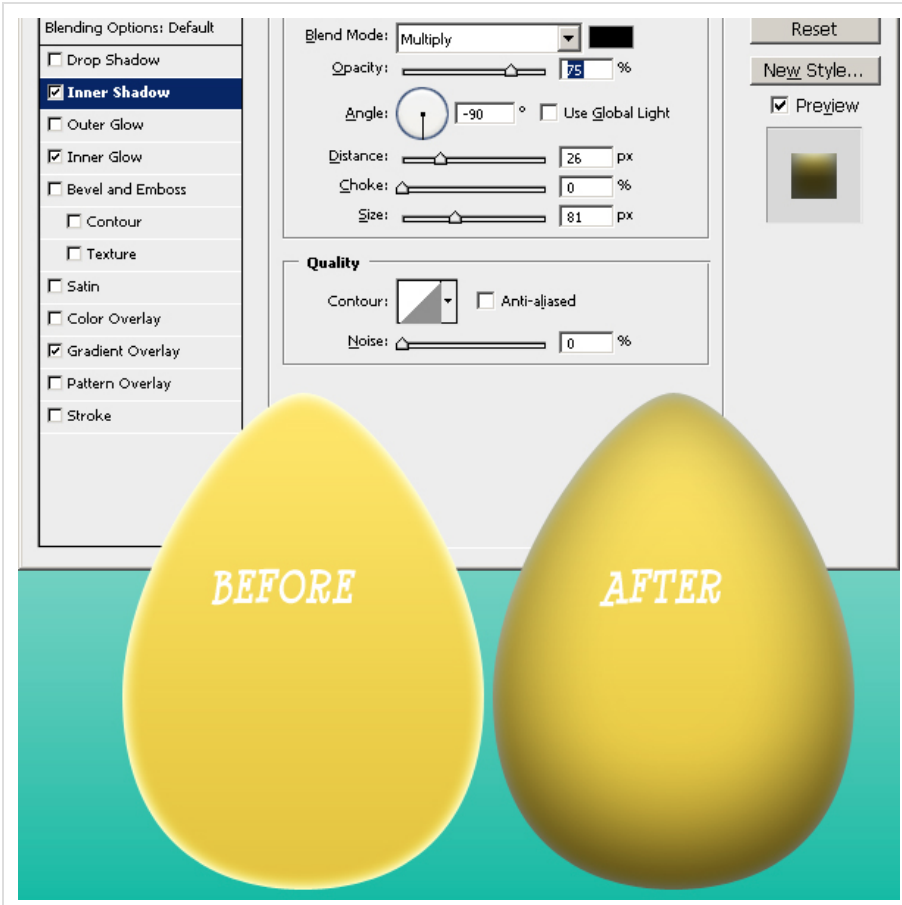
Find us on Facebook



8,087 people like psd-dude.com.

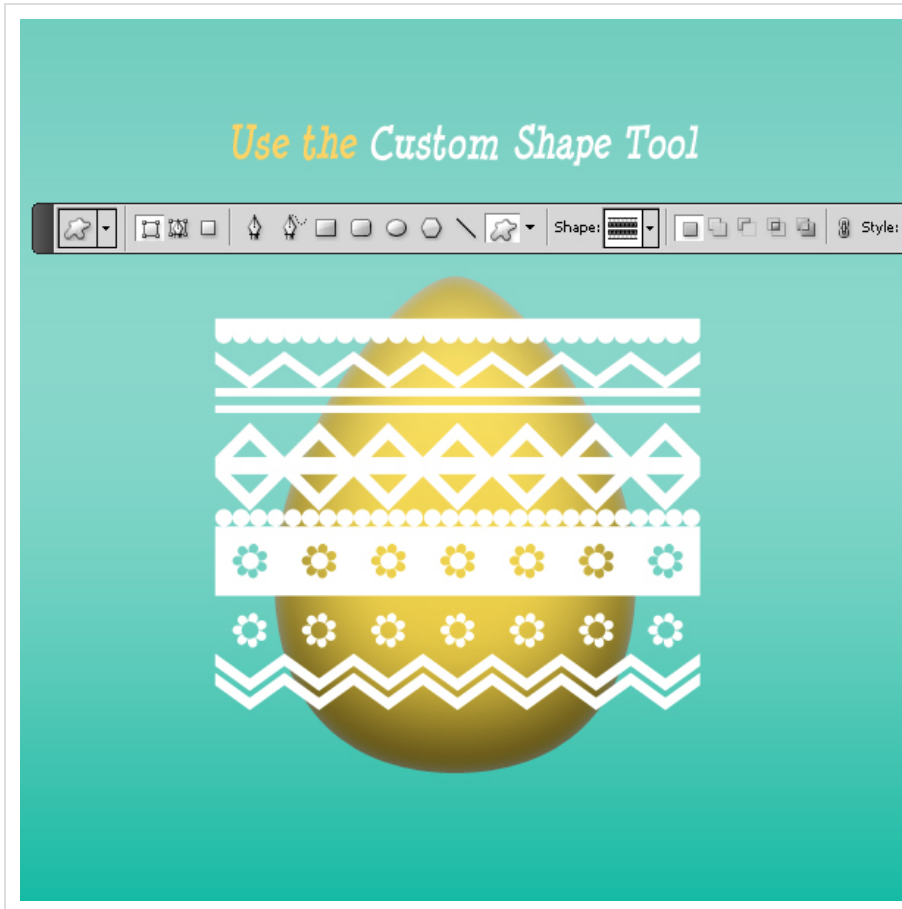


Add Inner Shadow, use black for the shadow.



Add Egg Decoration

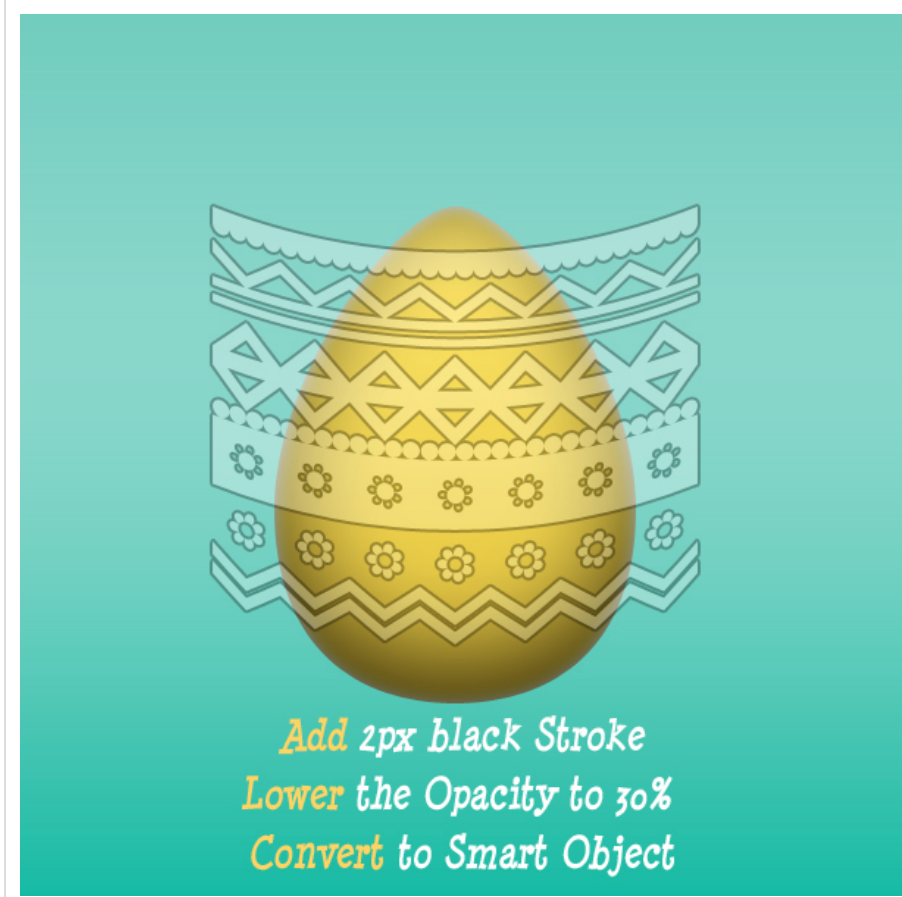
So far we have a nice looking vector egg. Time to add easter decoration to our little egg. Because we have a vectorial shape and I intend to keep it that way, I have decided to use some Photoshop Custom Shapes that I have made a week ago. So download the [Photoshop Shapes Inspired by Romanian Folk Art](#) and load them in your Photoshop program. Create a new layer and call it Decoration Layer. Use white for the shape color.



I will now add a round curved shape to the decoration layer. To do that go to Edit, Transform and choose Warp. You can see a white point. Simply drag it down.

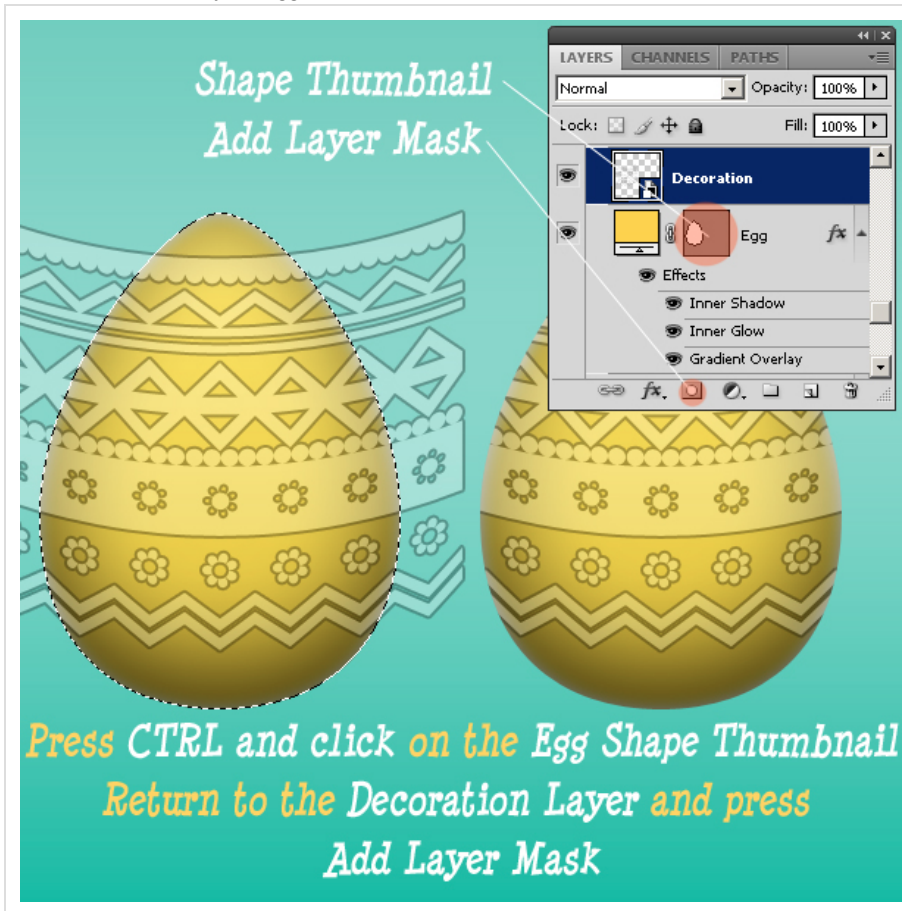


Add a little 2px black Stroke to our Decoration Layer. Change the opacity of the layer to 30%. Right click on the layer name and Convert into Smart Object.



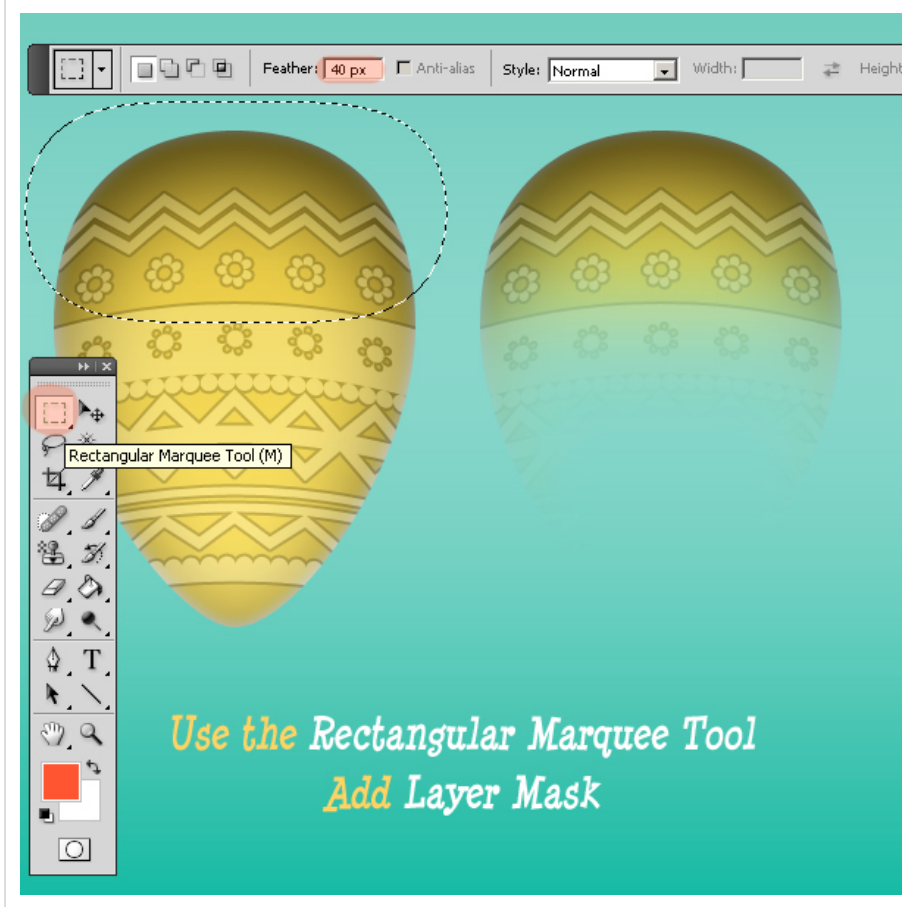
Add Layer Mask

Press CTRL and click on the Egg Shape Thumbnail as shown in the image. Return to the Decoration Layer and with the egg shape selected press Add Layer Mask. You can see that now from the decoration it is visible only the egg area.



Add Egg Shadow or Refraction

The egg is standing on a horizontal surface so I want to add a little shadow or refraction. In fact I don't know if it is shadow or refraction. Select the two layers and create a group. Convert this group into smart object. Flip it Vertical. Now make a selection with the Rectangular Marquee Tool. Add Layer Mask. Lower the opacity to 30%.

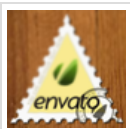


You can add little cracks on the egg surface for a more realistic look and that is all.

Easter Vectorial Egg



Find more Photoshop resources...



Vector Postage and R...

4\$



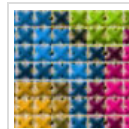
Fireworks Sparklers E...

4\$



Stars Glitter Sequins ...

4\$



Cross Stitch and Nee...

4\$



Adobe Creative Cloud™ Student and Teacher Edition

Get Creative Cloud for ~~US\$49.99/mo.~~ **US\$19.99/mo.**

That's 60% off. Students and teachers, join by 4/7/13 to get this great rate for 12 months.

[Learn more](#) ~~US\$49.99/mo.~~ **US\$19.99/mo.**

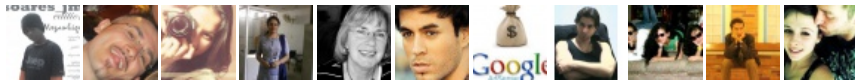
Find us on Facebook



psd-dude.com

Like

8,087 people like psd-dude.com.



Facebook social plugin

10 comment(s) for "Draw an Easter Egg in Photoshop"



john

7:00 AM Tuesday, April 12, 2011

it looks very realistic but I was wondering how did you make the cracks on the egg surface?

[reply](#)



tirath

7:00 AM Tuesday, April 12, 2011

Excellent tutorial with nice realistic output
Thanks so much for your all grate tutorials
you make Photoshop more interesting
keep up good work
god bless you :-)

[reply](#)



PsdDude

7:00 AM Tuesday, April 12, 2011

Hi John, the effect is pretty simple .. just draw the cracked shapes with the Pen Tool. Choose the color #ebfafb .

Add Layer Style Effects:

- Stroke: add a 1px stroke, color #e7e0b4.
- Add Inner Shadow, distance 2 px , size 3 px, color bl

[reply](#)



melissa

7:00 AM Wednesday, April 13, 2011

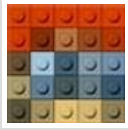
hi,

Love this site! its such a big help!!

how did you create the grass?

thanks!

[reply](#)



PsdDude

7:00 AM Wednesday, April 13, 2011

Hi melissa!

The grass is easy to make. Adobe Photoshop CS4 has a list of predefined brushes. Among this brushes there is a brush called "grass" ; use it with different tones of green and that is all.

[reply](#)

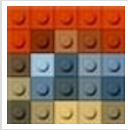


Jill

7:00 AM Thursday, April 28, 2011

This is GREAT!!! Thanks so much....

[reply](#)

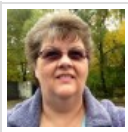


PsdDude

7:00 AM Thursday, April 28, 2011

your welcome Jill !

[reply](#)

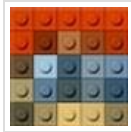


Bonnie

4:04 AM Monday, January 28, 2013

How would you make these easter eggs if you only have Photoshop CS which doesn't have the warp tool. Is there another way to wrap the design around the egg?

[reply](#)

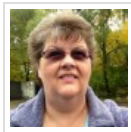


John

4:07 AM Monday, January 28, 2013

You can try to use the Filter > Distort> Spherize filter (but you will have to rasterize the folk motif shape before you apply the filter) ... hope it works!

[reply](#)



Bonnie Gean

12:30 AM Tuesday, January 29, 2013

John, that worked perfectly! Thanks!

[reply](#)

Leave a comment

Name(required)

Email(required)

Website(optional)

Upload your fan art

Share your Psd Dude inspired works

[Submit Comment](#)

Notify me of followup comments via email

Site Content

Tutorials

- Drawing
- Icons and Buttons
- Photo Effects
- Photo Manipulation
- Text Effects
- Textures and Patterns

Resources

- Brushes
- Featured Artists
- Icons
- Inspiration Images
- Interviews
- Logos
- Patterns

More Resources

- Photoshop Art Works
- Stock Images
- Templates
- Textures
- Tutorials
- Vectors
- Wallpapers

About Us

Our site

- Write tutorial
- Advertise with us
- Partner link exchange
- About Us

Connect With Us

Connect

- Follow us on Twitter
- Join us on Facebook
- Watch us on DeviantArt
- RSS Feed
- Contact us